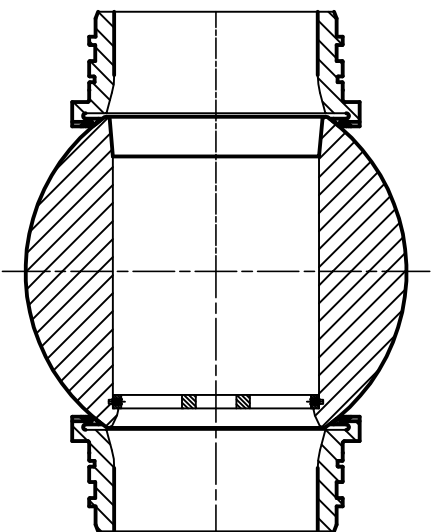
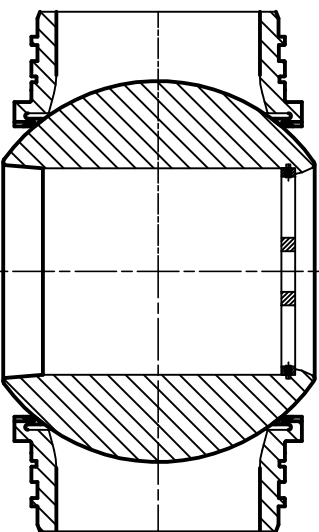


pos. 1



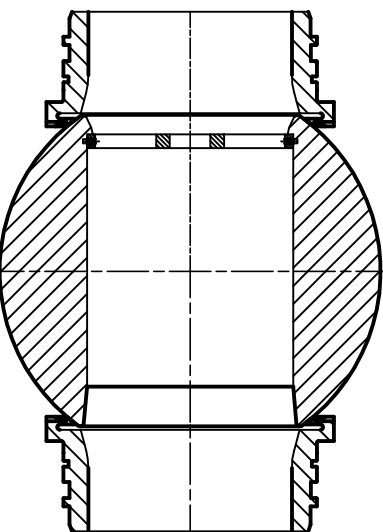
- VALVE OPERATION¹**
- OPEN
- LAUNCH / RECEPTION PIG
MECHANICAL STOP¹
- FIXED

pos. 2



- VALVE OPERATION¹**
- CLOSED
- INSERT/EXTRACTION PIG
MECHANICAL STOP¹
- MOBILE THREADED WITH CHAIN
- FIXED AT GEARBOX HOUSING

pos. 3



- VALVE OPERATION¹**
- OPEN
- LAUNCH / RECEPTION PIG
MECHANICAL STOP¹
- FIXED

2	REVISION		16-04-19	R.N.		G.T.	M.G.
1	REVISION		08-08-19	R.N.		G.T.	M.G.
0	FIRST ISSUE		10-01-19	R.N.		G.T.	M.G.
R	ISSUE OR REVISION	DATE	BY	CHKD	APPR.		
CROSS SECTIONAL ASSEMBLY DRAWING							
MATERIAL SPECIFICATION - OVERALL DIMENSION							

PIG BALL VALVE 3 PIECES
TRUNNION BALL-METAL SEATED



DRAWING N° VI-1200010-01
REV. 2
SHEET 3/3