



C30

QUICK GUIDE WEB EDITION



WELCOME TO THE GLOBAL FAMILY OF VOLVO OWNERS!

Getting to know your new vehicle is an exciting experience.

This Quick Guide provides a brief overview of the most common features and functions in your Volvo.

However, for the most up-to-date and detailed descriptions and instructions, as well as important warnings and other information not included in this folder, please refer to your Owner's Manual.

An asterisk (*) indicates optional equipment.

For additional information, contact Customer Service:

U.S.A.: 1-800-458-1552 www.volvocars.us

Canada: 1-800-663-8255 www.volvocars.ca

REMOTE KEY & KEY BLADE



KEY BLADE

Used to lock/unlock the glove compartment or the driver's door if the vehicle has no electrical current.



Locks the doors and liftgate, and arms the alarm.



Unlocks the doors and liftgate^A and disarms the alarm.



Unlocks (but does not open) the liftgate.



Approach lighting illuminates lights in door mirrors, cabin, footwells, license plates. Turn signals and parking lights illuminate.



"Panic" alarm.
– Press and hold to sound the alarm.
Turn off alarm with unlock button.

^A Automatic relock occurs if no door/liftgate is opened within 2 minutes after unlock.

AUTOSTART

Depress the clutch and/or brake pedal. Turn the key/keyless drive start control to position **III** and release it. The engine will start automatically.



NOTE

After cold starts, your engine will idle at a higher speed for a short time.

SETTING THE CLOCK



1. Press the MENU button on the center console control panel.
2. Select **Clock adjust**.
3. Press ENTER.
4. Use the left/right arrow keys on the navigation control to highlight a number in the clock.
5. Set the time by using the number keys or with the up/down arrow keys.
6. Press ENTER to save the change and exit the menu.

TURN SIGNALS



- A** Lane-change sequence, three flashes.
B Full turn sequence.

STEERING WHEEL ADJUSTMENT



WARNING

Never adjust the steering wheel while driving.

LIGHTING PANEL



- 0** Automatic headlights. High beam flash only.
- P** Parking lights.
- H** Headlights: turn off when ignition is switched off, high/low beams.
- A** Auto daytime running lights*, Active Bending Lights* (headlight beams follow movements of the steering wheel).
- D** Display & instrument panel lighting.
- F** Front fog lights*.
- F** Open the fuel filler door.
- R** Rear fog light (driver's side only).
- A** High beam flash.
- B** Toggle between high/low beams, home safe lighting.

TIRE PRESSURE MONITORING SYSTEM (TPMS)



When a low tire pressure warning message (**LOW TIRE PRESS. CHECK TIRES** or **VERY LOW TIRE PRESSURE**) has been displayed and the tire pressure warning light (⚠) has illuminated, one or more tires has low inflation pressure.

Check the inflation pressure of all four tires with

a tire pressure gauge as soon as possible and pump the tire(s) with low pressure to the recommended inflation pressure.

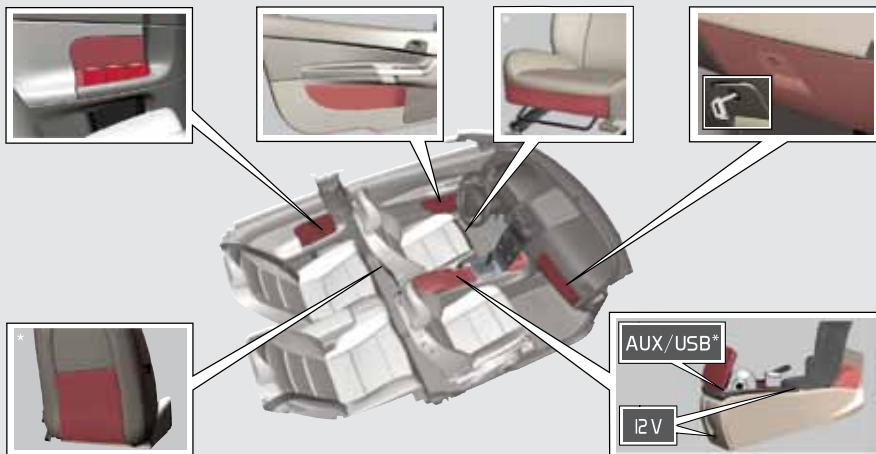
Refer to the inflation pressure tables in the chapter "Wheels and tires" in the Owner's Manual.

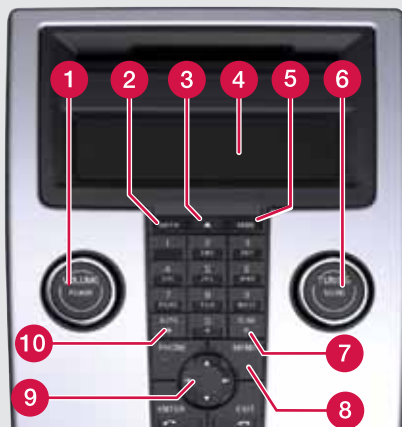
STORAGE SPACES, 12-VOLT SOCKET & AUX/USB* CONNECTOR



The 12-volt sockets in the cabin function in ignition positions **I** or **II**.

AUX/USB* can be used to connect e.g., an mp3 player to the vehicle's audio system.





- 1 Press to turn on/off. Turn to adjust volume.
- 2 **FM1**, **FM2** or **AM** radio.
- 4 **Display**
- 5 **MODE**, **CD**, Sirius satellite radio*, **AUX/USB**^A.
- 6 **Sound** settings. Press to select e.g., **BASS**, **TREBLE**, etc. Turn to adjust.
- 8 **MENU**. **AUX**, volume and advanced sound settings.

HD RADIO

HD radio reception is subject to coverage limitations. See your Owner's Manual for details.

^A **AUX/USB** sockets for e.g., an mp3 player. Set the device's volume to medium for best sound quality. An iPod® connected to the USB socket will also be charged.

RADIO

- 6 Turn to select a radio station.
- 7 Search for the next strong station.
- 9 Search for stations with left/right arrows. Store up to 20 stations by pressing and holding one of the preset buttons **0–9** in **FM1** and **0–9** in **FM2**, until the stored station is confirmed in the display.
- 10 **Autostore** stations by pressing for 2 seconds. **AUTOSTORE** is displayed during the search. The 10 strongest stations are stored. Press **0–9** to select a station.

CD PLAYER

- 3 Press to eject a CD.
- 6 Turn to change tracks.
- 9 Change tracks with left/right arrows.

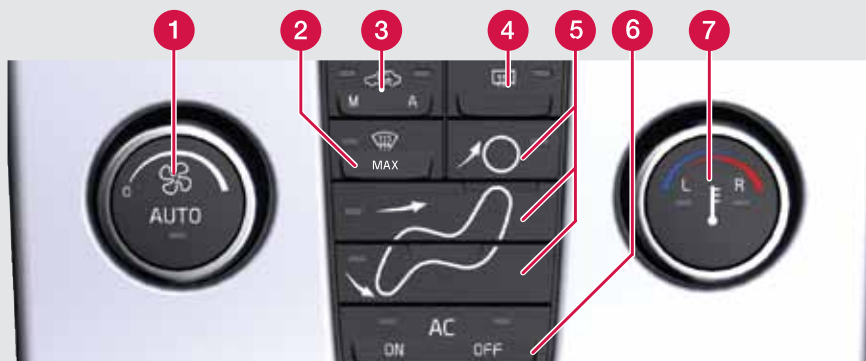
BLUETOOTH®

1. Make the cell phone searchable/visible.
2. Press the **PHONE** button on the audio system control panel briefly.
3. Select **Add phone** in the audio system display.
4. Select the cell phone to be connected.
5. Enter the numbers shown in the audio system display using the cell phone's keypad.

CD STORAGE



The deep center storage compartment has room for 10 CD jewel cases. These cases must be inserted with their spines upward in order to allow room for 10 CDs.



AUTOMATIC CONTROL

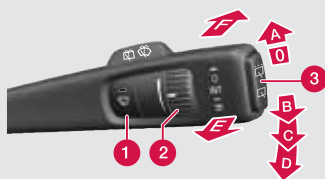
In **AUTO** mode, ECC controls all functions automatically and makes driving more pleasant with optimal air quality.

- 1 **Press AUTO** to maintain automatic cabin temperature, balanced airflow and other settings.
- 7 **Press** to individually adjust the left (L) or right (R) side.
Turn the dial to the desired temperature, which is shown in the display.


MANUAL CONTROL

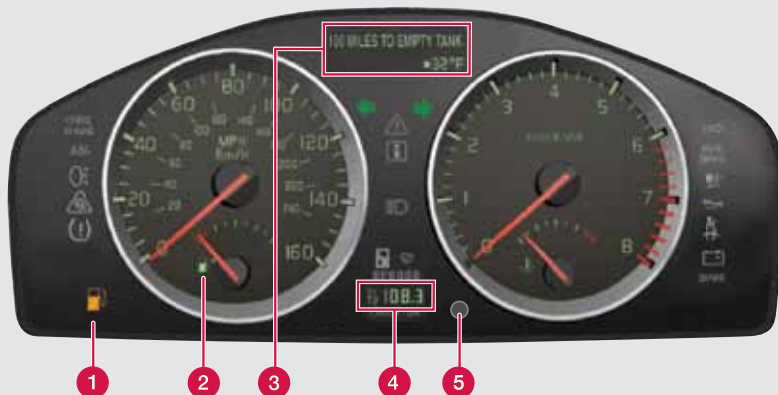
- 1 **Blower speed.**
- 2 **Max. defroster.** Directs maximum air flow to the windshield and front side windows.
- 3 **Recirculation**
- 4 **Heated rear window and door mirrors.**
- 5 **Air distribution.**
- 6 **Air conditioning Off/On** to cool the cabin and defog the windows.

WIPERS AND RAIN SENSOR*



- 1 Rain sensor **On/Off** with the lever in the **0** position.
- 2 Turn to adjust intermittent wiper speed or rain sensor sensitivity where applicable.
- 3 Liftgate wiper – normal/interval.

- | | |
|---|---|
| A ➔ | Single wiper sweep. |
| 0 | Off |
| B ➔ | Intermittent wipers. Turn (2) to adjust interval. |
| C ➔ | Normal wiper speed. |
| D ➔ | High wiper speed. |
| E ➔ | Windshield and headlight washers. |
| F ➔ | Liftgate washer. |
|  | Displayed when the rain sensor is active. |



1 Low fuel level indicator.

When the symbol illuminates, refuel as soon as possible.

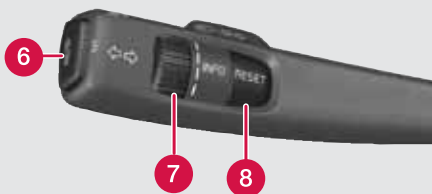
2 Fuel gauge.

The fuel filler door is on the passenger's side of the car, as indicated by the arrow.

3 Information display (trip computer information, messages, clock and ambient temperature).

4 The trip odometer display shows two separate trip odometers, T1 & T2.

5 A short press toggles between T1 & T2. A long press resets the displayed odometer.



6 Press to display or erase a message.

7 Turn to show trip computer information alternatives.

8 A short press resets current function. A long press resets all functions.



NOTE

The display text **MILES TO EMPTY TANK** is an approximation, based on recent average fuel consumption.

BLIND SPOT INFORMATION SYSTEM (BLIS)*



If the BLIS indicator lights illuminate occasionally even when there are no other vehicles in the blind area, this may be caused by light reflected from a wet road surface, the vehicle's own shadow against a large, light, smooth surface, or sunlight directly in the camera when the sun is low on the horizon.

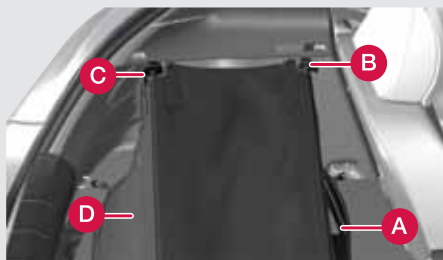
In the event of a fault, **BLIND SPOT SYST. SERVICE REQUIRED** will be displayed. See the Owner's Manual for other BLIS-related messages.

REFUELING



1. Press this button to open the fuel filler door.
2. Hang the fuel filler cap on the hook while refueling.

SOFT CARGO AREA COVER*

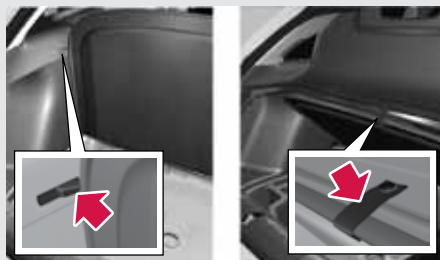


1. Attach the hooks near the floor (A).
2. Press together the spring-loaded rails and insert them in the attachments (B) on both sides.
3. Insert the attachments in (C) in the same way.
4. Place the hooks in (D).

Remove the attachments at (D) and (C) if necessary on both sides when loading the cargo area.

Remove (D), (C), (B), and (A) and roll up the cover when it is not in use.

HOLDERS FOR FLOOR HATCH



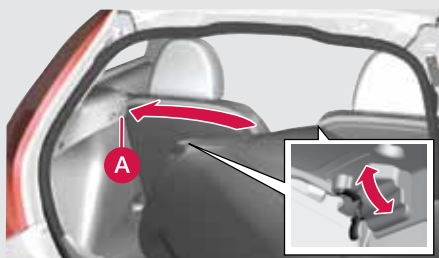
Open floor hatch with/without cargo area cover.

FOLDING DOWN THE REAR SEAT BACKRESTS



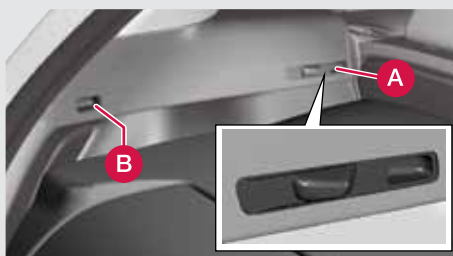
Pull up the catches and fold the backrests forward.

RIGID CARGO AREA COVER*



INSTALLING

Pull all four locking buttons back as far as possible. Carefully lift in the cover, place the front section on the two supports behind (A) on both sides.



Place one rear lock at (B) and press the lock button forward. Lock the other buttons in the same way.

REMOVING

Pull the lock buttons rearward as far as possible at (A) first, then at (B). Lift out the cover.

ADJUSTING THE FRONT SEAT



1 Lumbar support.

2 Head restraint height adjustment.

3 Access to rear seat.

4 Backrest tilt.

5 Raise/lower the seat.

6 Raise/lower the front edge of the seat cushion.

7 Forward/rearward.

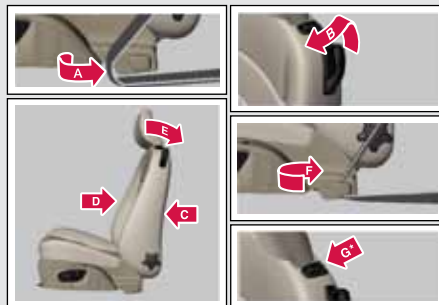
REMOTE KEY AND THE POWER SEAT

Each of the remote keys can be used by different drivers to store the driver's seat position in the following way:

- Adjust the seat to your preferences.
- Lock the vehicle by pressing the lock button on the remote key that you normally use. This stores the seat's current position in that remote key's memory^A.
- Unlock the vehicle (by pressing the unlock button on the **same** remote key) and open the driver's door. The driver's seat will automatically move to the position stored in the remote key (if the seat has been moved since you left it).

^A This setting does not affect the separate power seat memory. Consult your owner's manual for detailed information.

ENTERING THE REAR SEAT



MANUAL SEAT

Moving the seat forward

1. Remove the seat belt from the guide (A).
2. Pull up the handle (B) and fold the backrest forward until it locks in position.
3. Move the seat forward (C).

Moving the seat rearward

1. Move the seat rearward until it reaches the desired position (D).
2. Pull up the handle (E) and return the backrest to the upright position.
3. Put the seat belt back into the guide (F).

POWER SEAT*

Moving the seat forward

1. Remove the seat belt from the guide (A).
2. Pull up the handle (B) and fold the backrest forward until it locks in position.
3. Press and hold in the front section of the button (G).

Moving the seat rearward

1. Press and hold in the rear section of the button (G).
2. Pull up the handle (E) and return the backrest to the upright position.
3. Put the seat belt back into the guide (F).



NOTE

When putting on the seat belt, it is easiest to reach for the lower section of the belt, near the guide, instead of reaching over your shoulder.