

# ***CEL 774 CONSTRUCTION PRACTISES***

***INDUSTRIALIZED BUILDING  
(Pre-fabrication)  
B. Bhattacharjee***

***CIVIL ENGINEERING DEPARTMENT  
IIT DELHI***



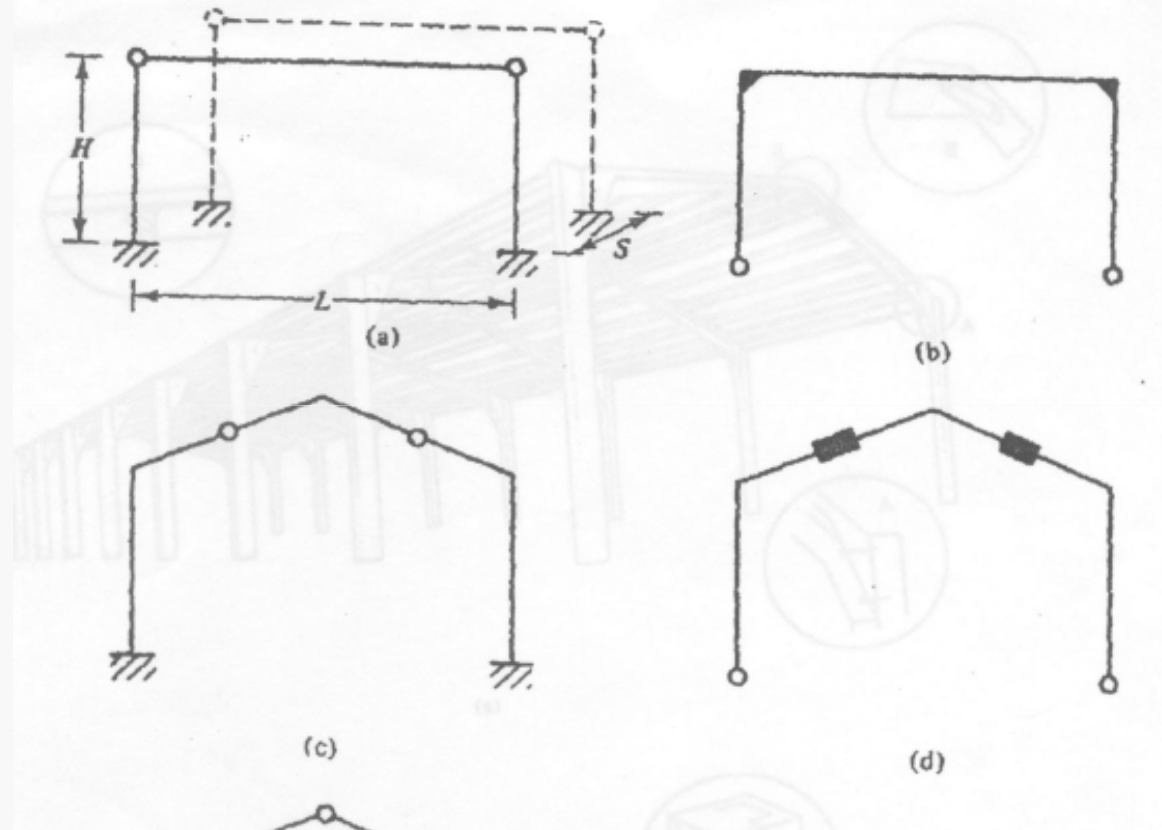
DEPARTMENT OF CIVIL ENGINEERING, IIT DELHI

# PRINCIPLES

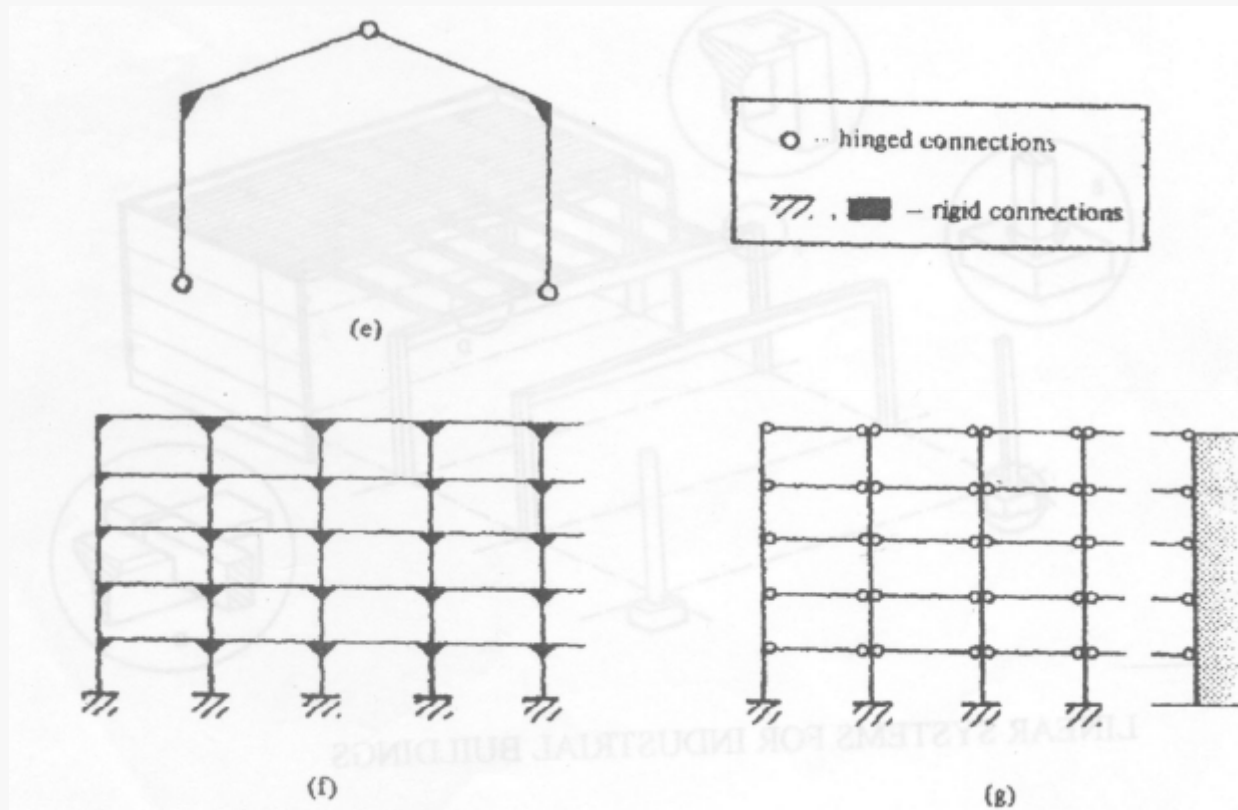
- *As many as possible components shall be prefab.*
- *Large prefab assembly with minimum erection, jointing & Finishing.*
- *Performance over life.*
- *Maximum diversification in design.*
- *Dynamic adjustments to need of user*
- *Effective coordination between design and production*



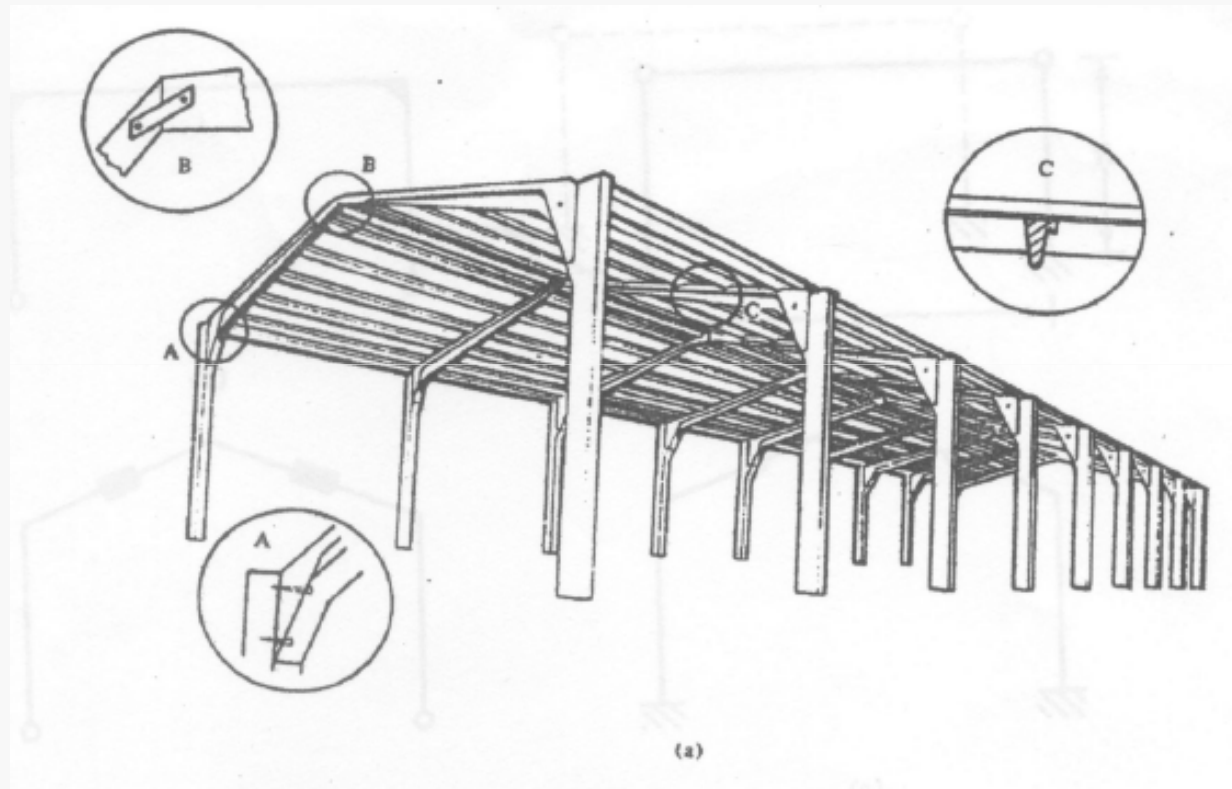
# LINEAR SYSTEM



# LINEAR SYSTEM

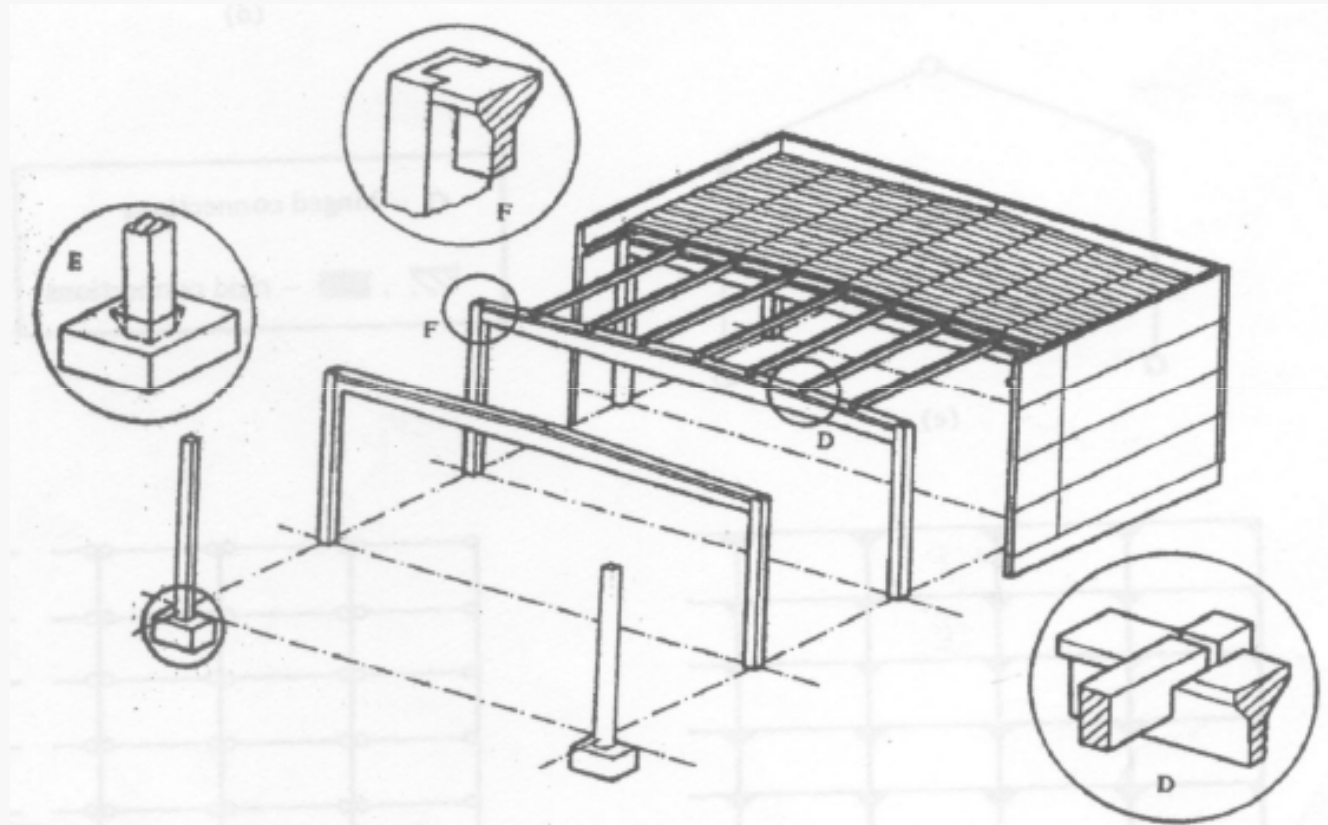


# ***LINEAR SYSTEM***



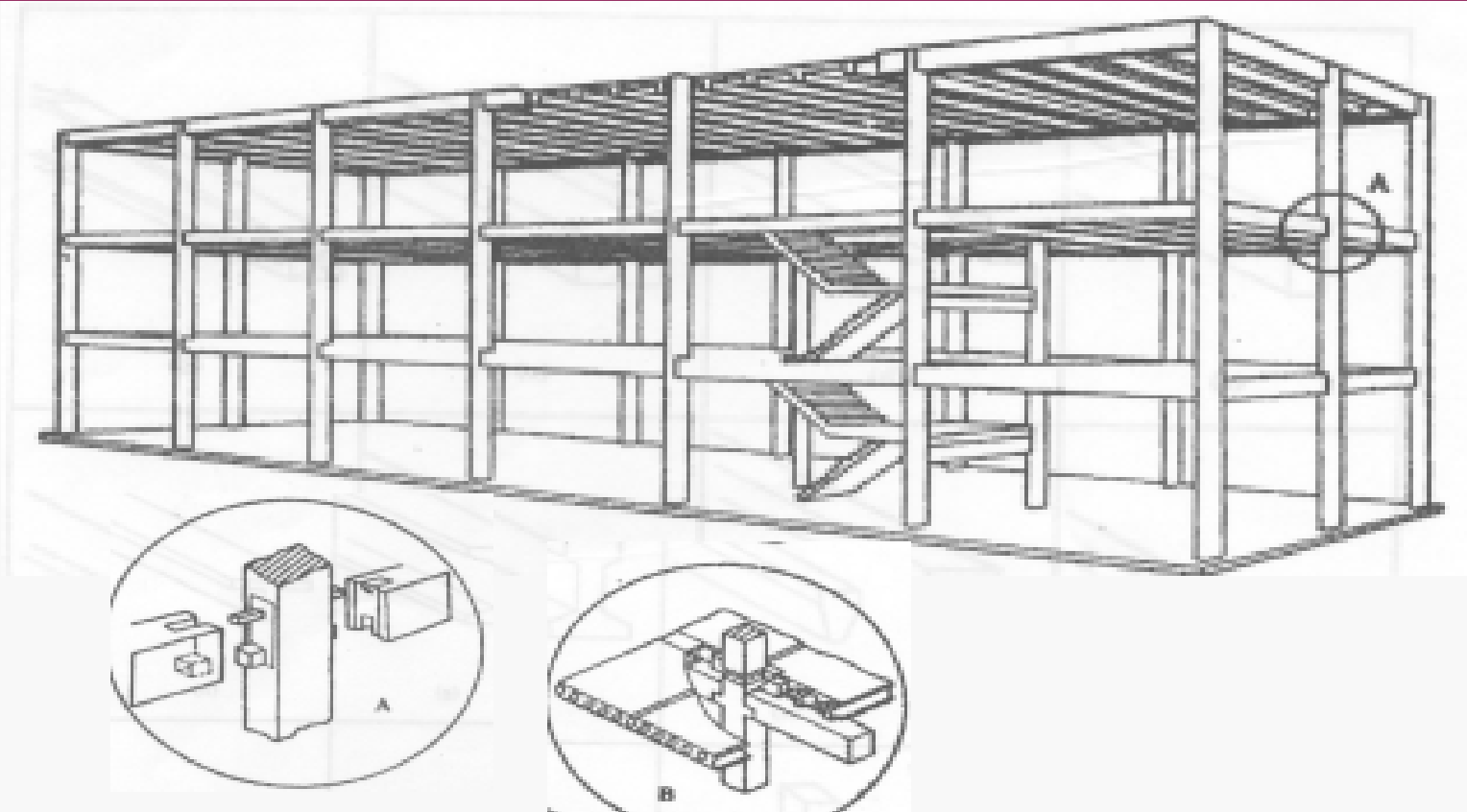
DEPARTMENT OF CIVIL ENGINEERING, IIT DELHI

# LINEAR SYSTEM



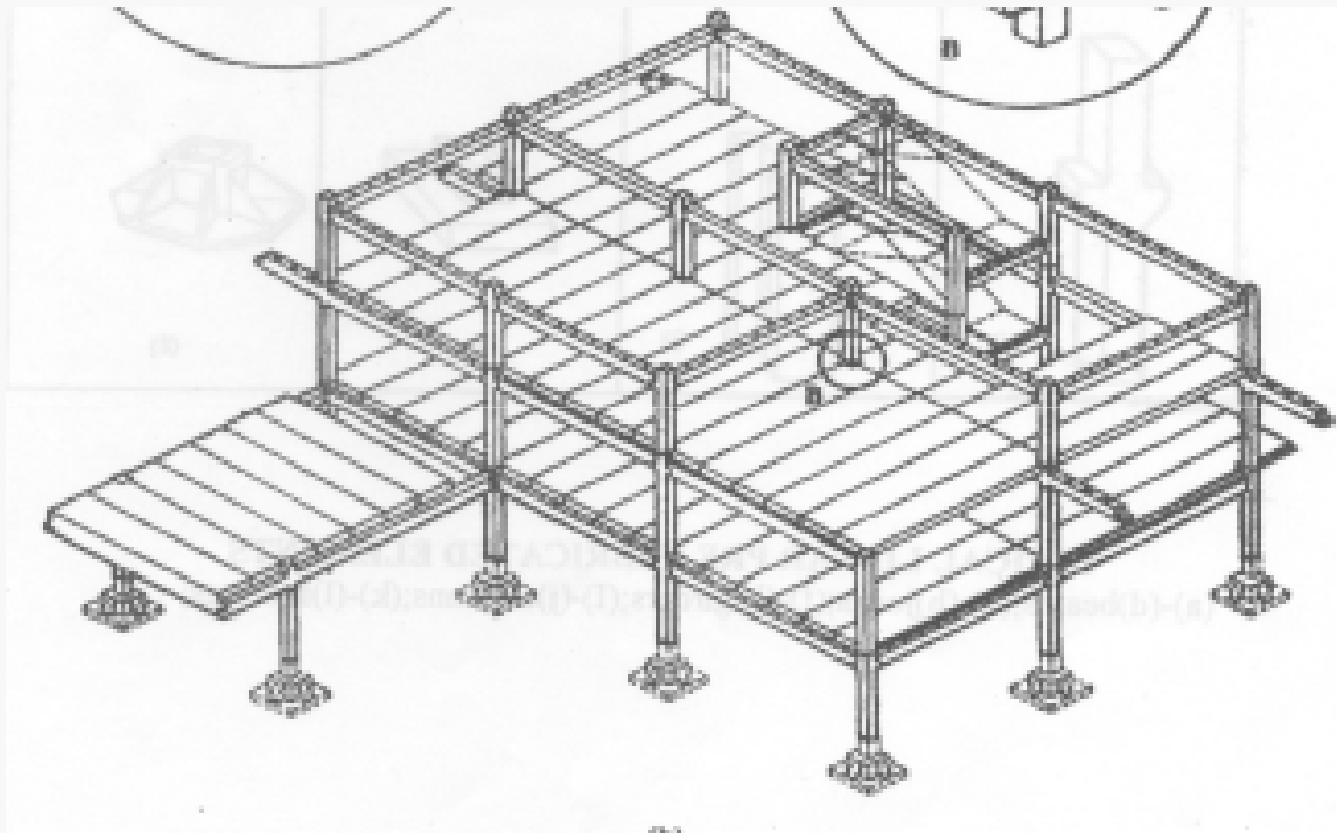
DEPARTMENT OF CIVIL ENGINEERING, IIT DELHI

# ***LINEAR SYSTEM***



DEPARTMENT OF CIVIL ENGINEERING, IIT DELHI

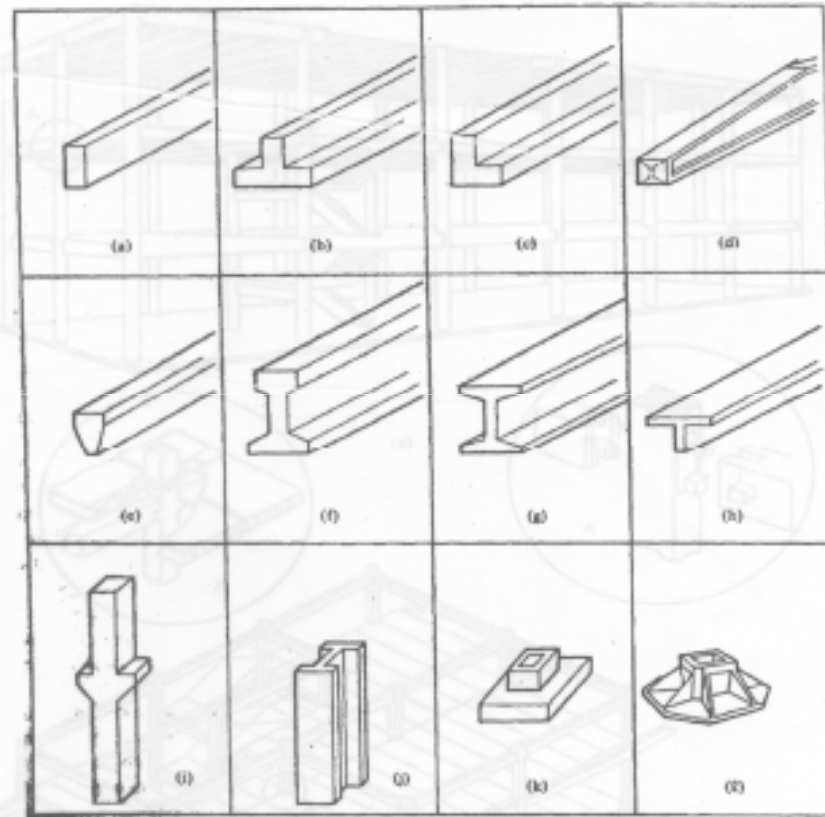
# ***LINEAR SYSTEM***



DEPARTMENT OF CIVIL ENGINEERING, IIT DELHI

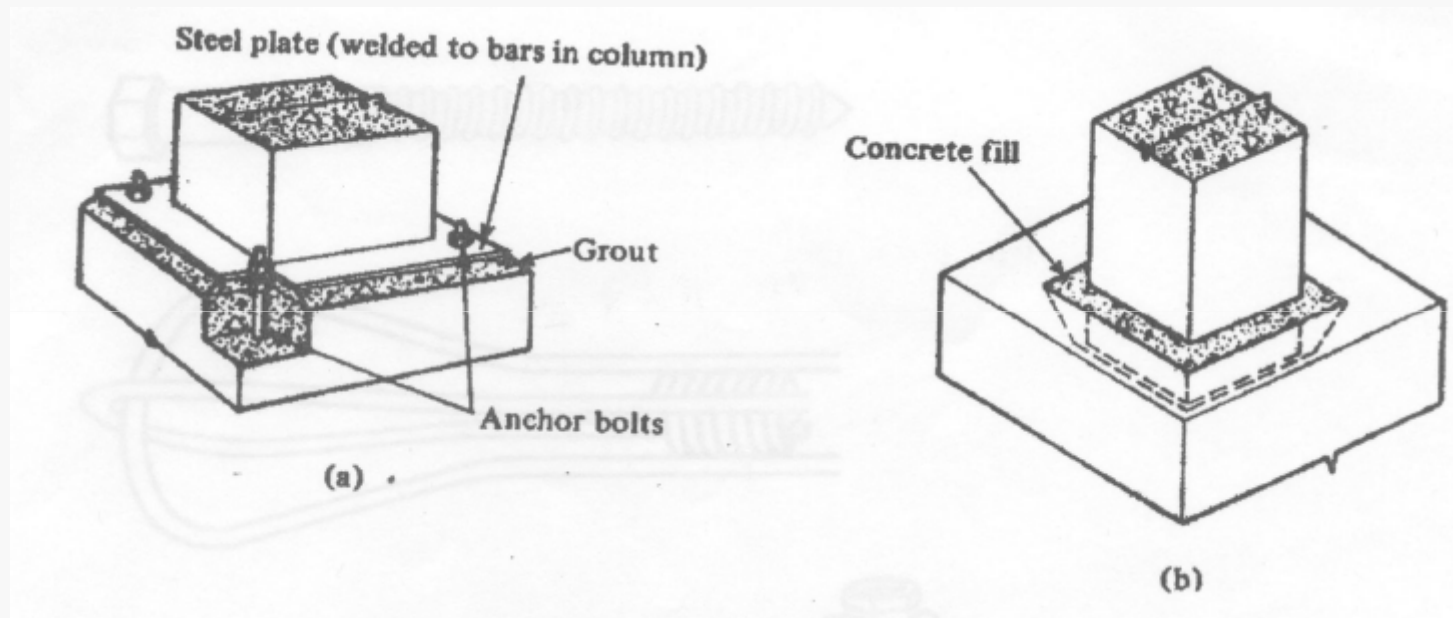


# ***LINEAR SYSTEM***

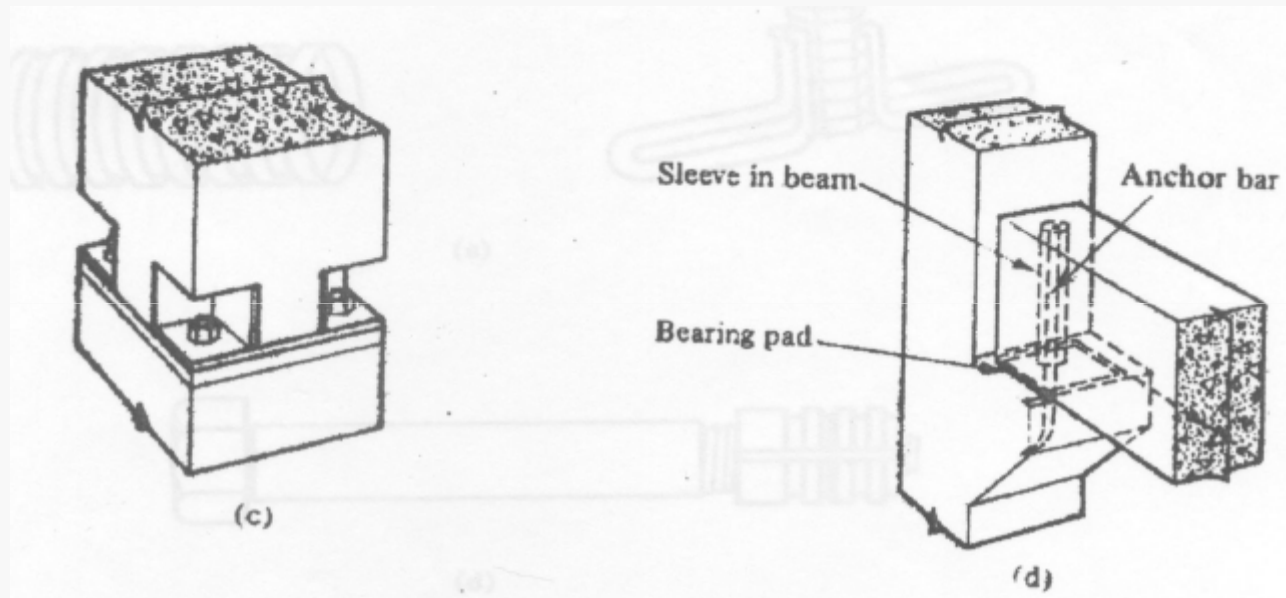


DEPARTMENT OF CIVIL ENGINEERING, IIT DELHI

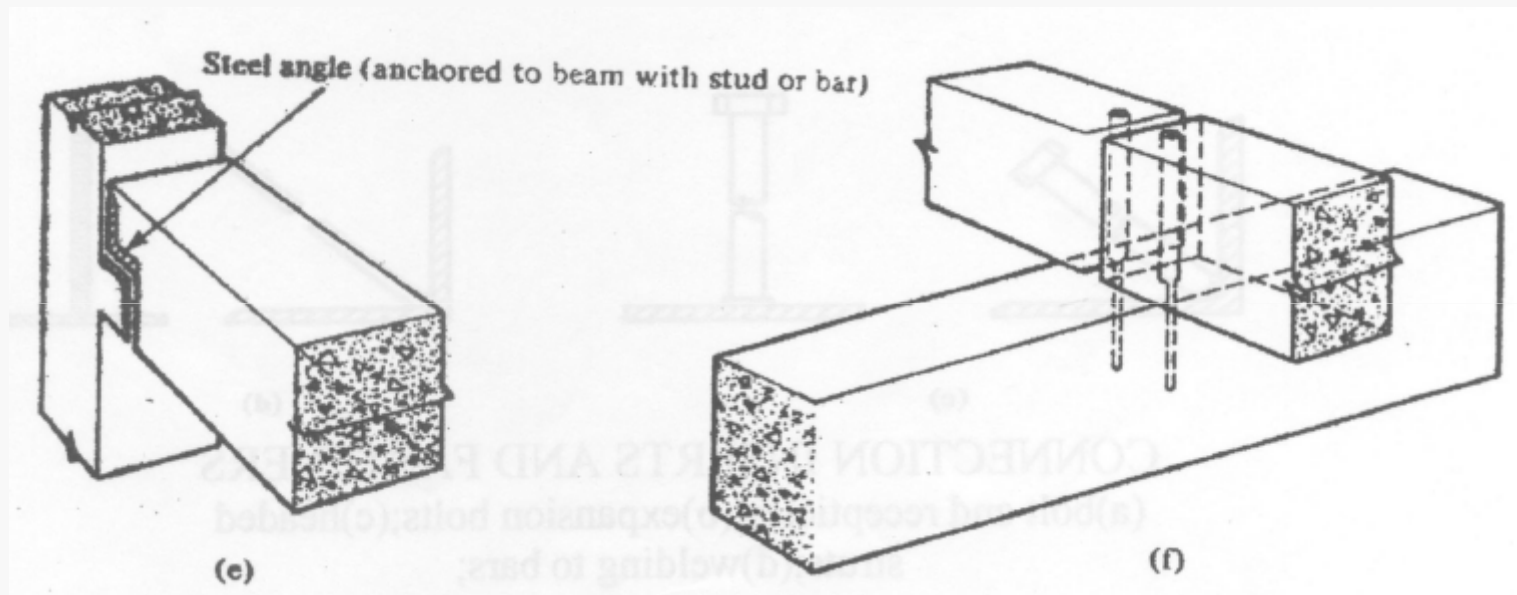
# LINEAR SYSTEM



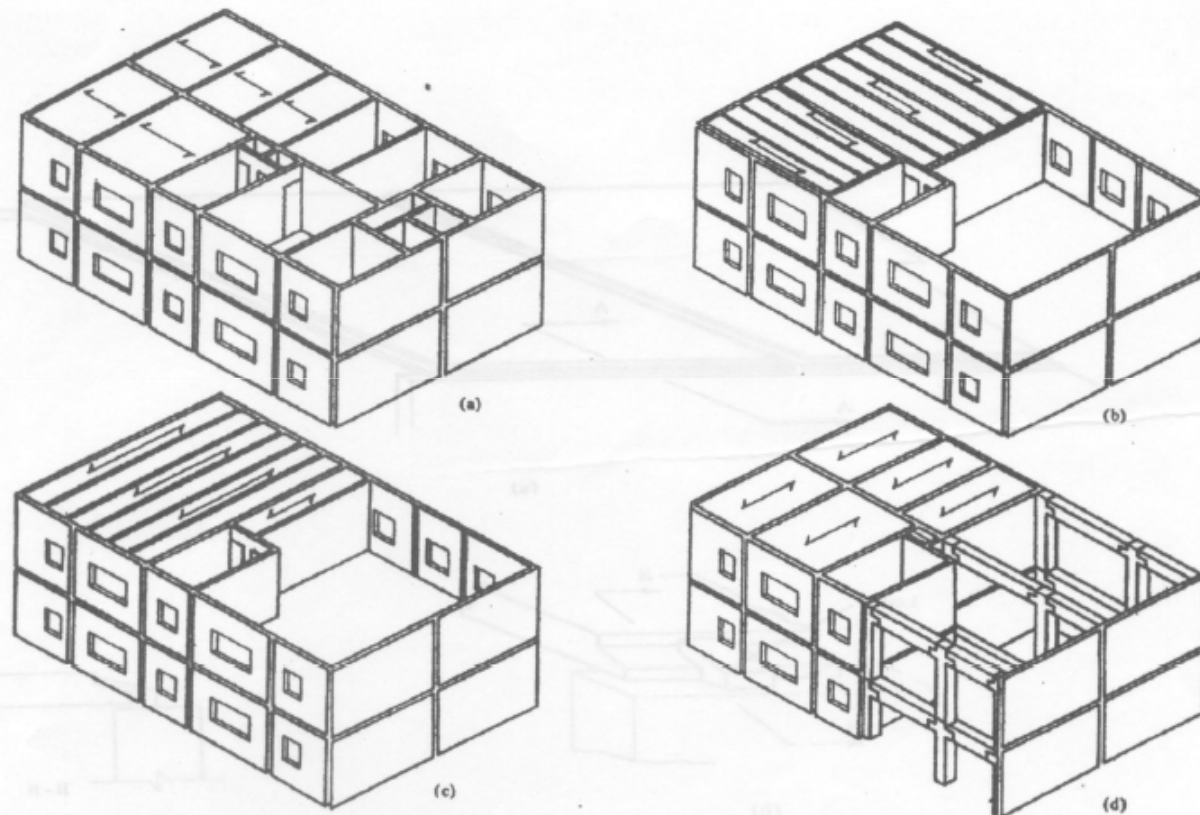
# ***LINEAR SYSTEM***



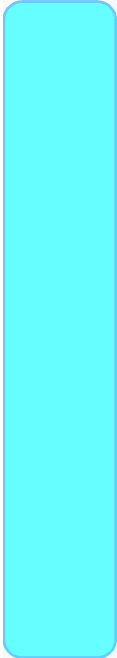
# LINEAR SYSTEM



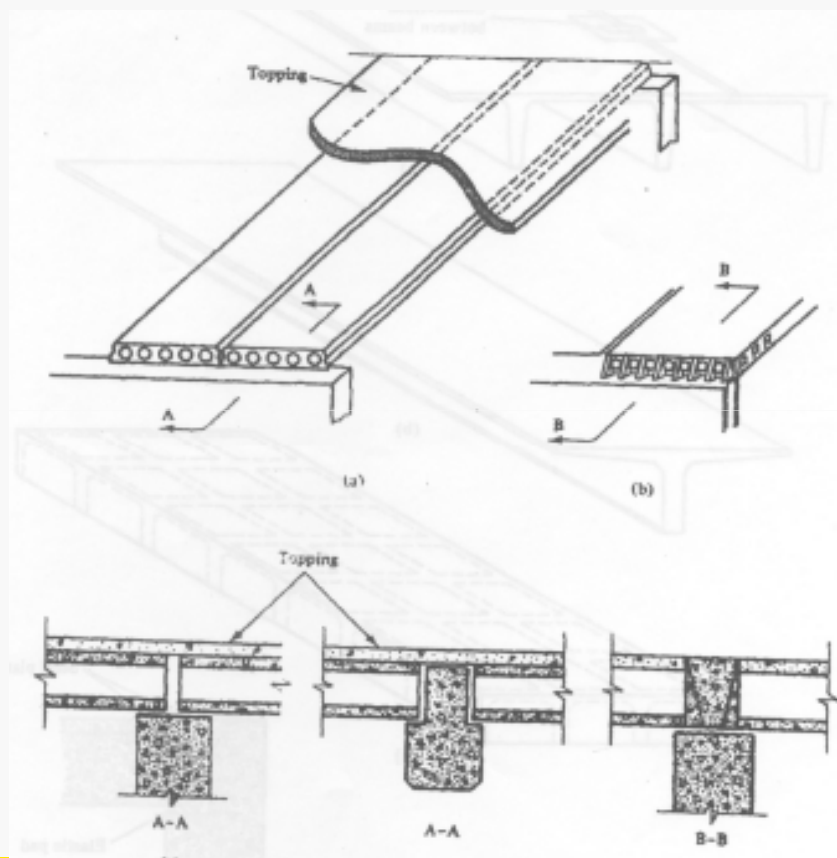
# ***PLANAR SYSTEM***



DEPARTMENT OF CIVIL ENGINEERING, IIT DELHI

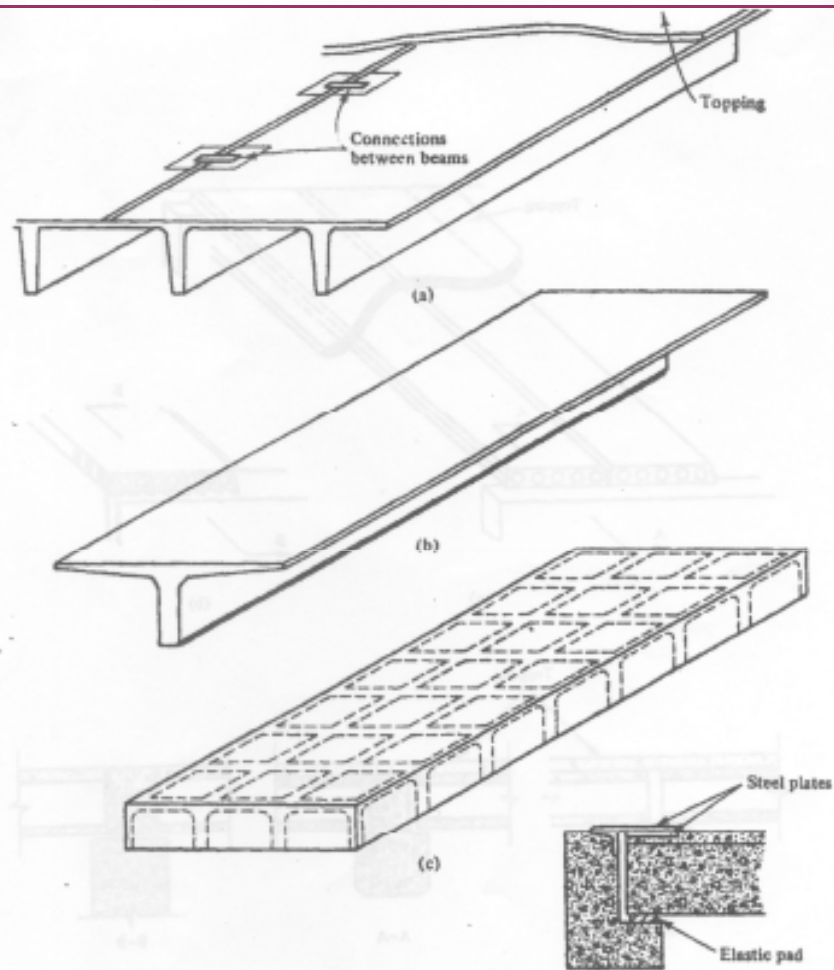


# PLANAR SYSTEM



DEPARTMENT OF CIVIL ENGINEERING, IIT DELHI







# PLANAR SYSTEM



DEPARTMENT OF CIVIL ENGINEERING, IIT DELHI



# PLANAR SYSTEM

Type of floor	Width (m)	Thickness (height) (mm)	Typical thickness- to-span ratio	Applicable span range (m)													
				2	4	6	8	10	12	14	16	18	20	24	28	30	
Flat slab (nonprestressed) 	2.40-4.00	100-150	1:25-1:30														
Hollow core slab (nonprestressed) 	0.60-1.20; 2.40 (modular)	140-220	1:25-1:30														
Hollow core slab (prestressed) 	0.60-0.90; 1.20-2.40 (modular)	140-300	1:30-1:45														
Double Tee (prestressed) 	2.40-3.00 (modular)	300-800	1:20-1:25														
Single Tee (prestressed) 	2.40-3.00 (modular)	300-1200	1:20-1:25														
Ribbed (masseter) slab (nonprestressed) 	1.00-2.00	300-500	1:25-1:30														



# ***PLANAR SYSTEM***



DEPARTMENT OF CIVIL ENGINEERING, IIT DELHI

***THANK YOU FOR  
HEARING***



DEPARTMENT OF CIVIL ENGINEERING, IIT DELHI