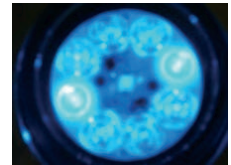
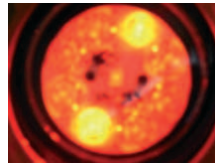
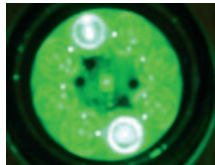
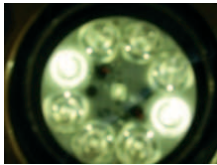


ARMADILLO AIRFIELD LIGHTING KIT



Armadillo is a Portable Lighting System for airfields consisting by a trailer carrying 66 versatile light units, which can be used in various situations, including:

- temporary, emergency, remote airfield/helipads with no permanent lighting
- maintenance of airfields/helipads in case of failures on the main lighting for taxiways, runways, thresholds and obstructions limits in case on emergency of repair

The set consists of 66 VERSAPOL lights which are very versatile since they can produce all the colors by simply selecting on the light panel. Can be used as runway lights (white), threshold lights (green), and runway end and obstruction lights (red).

The portable lights are LED-based and powered by internal rechargeable batteries.

The compact and rugged trailer contains the storage shelves which are powered to charge all the lights at the same time with a drop-in system, requiring no cables, and ensuring that each placed light is fully charged and ready to go.

The system is lightweight, durable and userfriendly.

MAIN FEATURES/BENEFITS

- LED based: high reliability, no maintenance for light sources
- Superior lighting autonomy: more than 20 hours at FAA intensity white color. Longer periods for other colors
- Light colors can be easily configured from panel selector to be used for every purpose
- All battery unit/modules rechargeable in the same time with drop-in contactorless supply embedded in the trailer
- Optional remote radio control with selfpropagating (mesh) transmission

FAA AC 150/5345-50B (PORTABLE RUNWAY AND TAXIWAY LIGHTS) compliant

ARMADILLO AIRFIELD LIGHTING KIT



SYSTEM CONFIGURATIONS

ARMADILLO 66

66 VERSAPOL. Multicolor light, battery powered.
Model POL-VIANEY

ARMADILLO 66-R (with radio control)

66 VERSAPOL-R Radio controlled multicolor light, battery powered. Model POL-VIDREY
2 WRC (Wireless Remote Control)

OPTIONAL UNITS

PAL (Portable Approach light) with a directional 5000cd white light beam.



DROP-IN CHARGER SYSTEM

Low profile design
Minimizes displacement
from jetwash

Led Board Accessible
Allows fast replacement

Handle
To carry and
place the unit



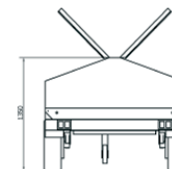
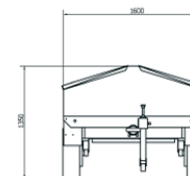
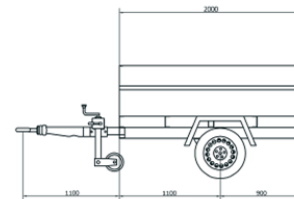
Battery Access
Thumb-screws;
No tools required

SPECIFICATIONS

VERSAPOL light unit



Overall dimensions	230 mm x 165 mm x 140 mm
Light intensity	3 lev., max 50cd (STANAG 3534)
Mass	3,5 kg
Standard compliance	FAA AC 150/5345-50 B
Light color (FAA L-863)	Whit/Red/G reen/Blue+ IR
Remote control (optional)	Radio UHF, OFF/Mode (VIS/IR)/ Intensity
Power supply	2 rechargeable batteries 6 V - 5 Ah or primary batteries 6 V - 12 Ah



Trailer



Overall dimensions	3100 mm x 1600 mm x 1350 mm one axe 1 ton full loaded
Hitch	hitch ball as standard, options available
Battery charge	power supply for 66 Versapol
Standard compliance	power cable, vehicle toolbox kit, light stakes



Headquarters:

Via A. De Gasperi, 7
40012 Calderara di Reno
Bologna - Italy
Tel: +39 05141377
Fax: +39 0514137555

Milan Office:

Via Rimini, 22
20142 Milano - Italy
Tel: +39 02581881
Fax: +39 0258188250

Calzoni.General@L-3com.com - www.calzoni.com

Cleared for public release by Calzoni on November 22, 2013. Data, including specifications, contained within this document are summary in nature and subject to change at any time without notice at L-3 Communications' discretion. Call for latest revision.
All brand names and product names referenced are trademarks, registered trademarks, or trade names of their respective holders.