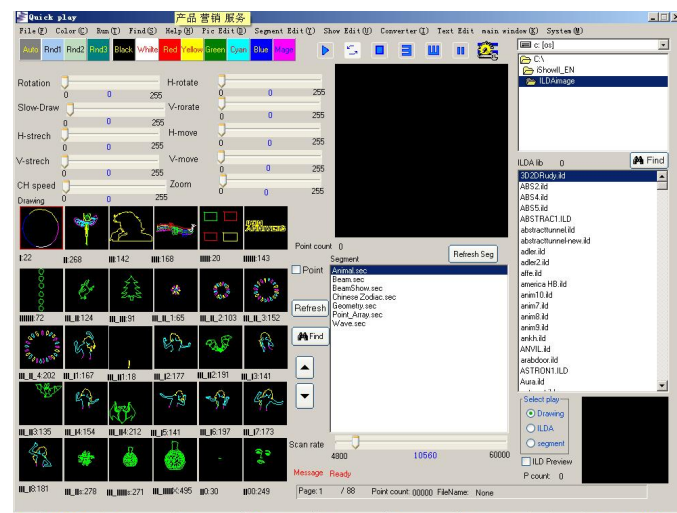


1. Connect the iShow USB box to PC, It will prompt you the new device is found, please install the driver from CD (Don't let it find automatically)
2. You need to install the driver two times.
3. Please connect the USB box with laser light via ILDA cable.
4. After install the drivers, please double click the iShow icon in the desktop

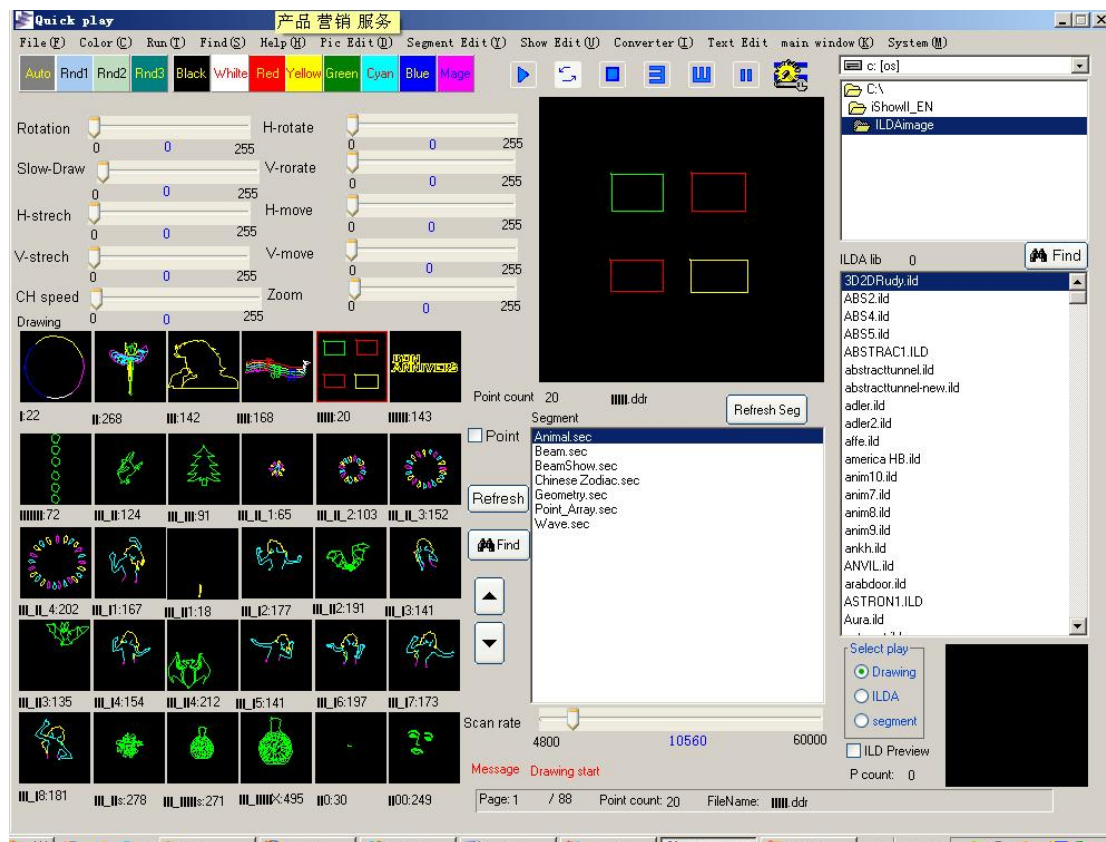


Before go to the next step, please confirm the USB device was found.

5. Please click Quick Play button



6. Double click the 4 rectangle image or other image you like, now it should output signal to laser light, and laser light will have output.



If iShow can't output continuously, please click the loop button

Note: Please install the iShow software on Win XP or other 32bit system, iShow do not support 64bit system.